

Collaboration is the Future of Telematics

Marina Ievleva
Regional Sales Manager MENA
OMNICOMM

Supply Chain & Logistics
Arabia, 24 October 2018

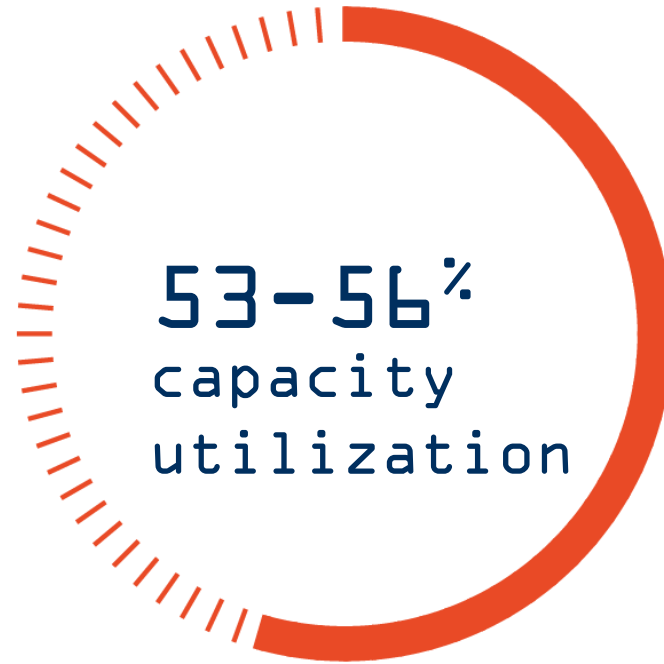
The image shows the interior of a car, viewed from the driver's perspective. The dashboard, steering wheel, and rearview mirror are visible. Overlaid on the car's interior is a network of blue icons connected by thin white lines. The icons include: a cloud, a satellite, a car, a location pin, a Wi-Fi signal, a smartphone, a heart with an ECG line, a battery, a musical note, a chip, a road, and a traffic light. The text "MILLIONS OF CONNECTED DEVICES" is centered in white, bold, uppercase letters across the middle of the image.

MILLIONS OF CONNECTED DEVICES

TONS OF DATA COLLECTED.



BUT STILL



** Frost & Sullivan, Logistics & Transportation Efficiency*



THERE IS A SOLUTION.
EVERYONE KNOWS IT.

WE HAVE IT

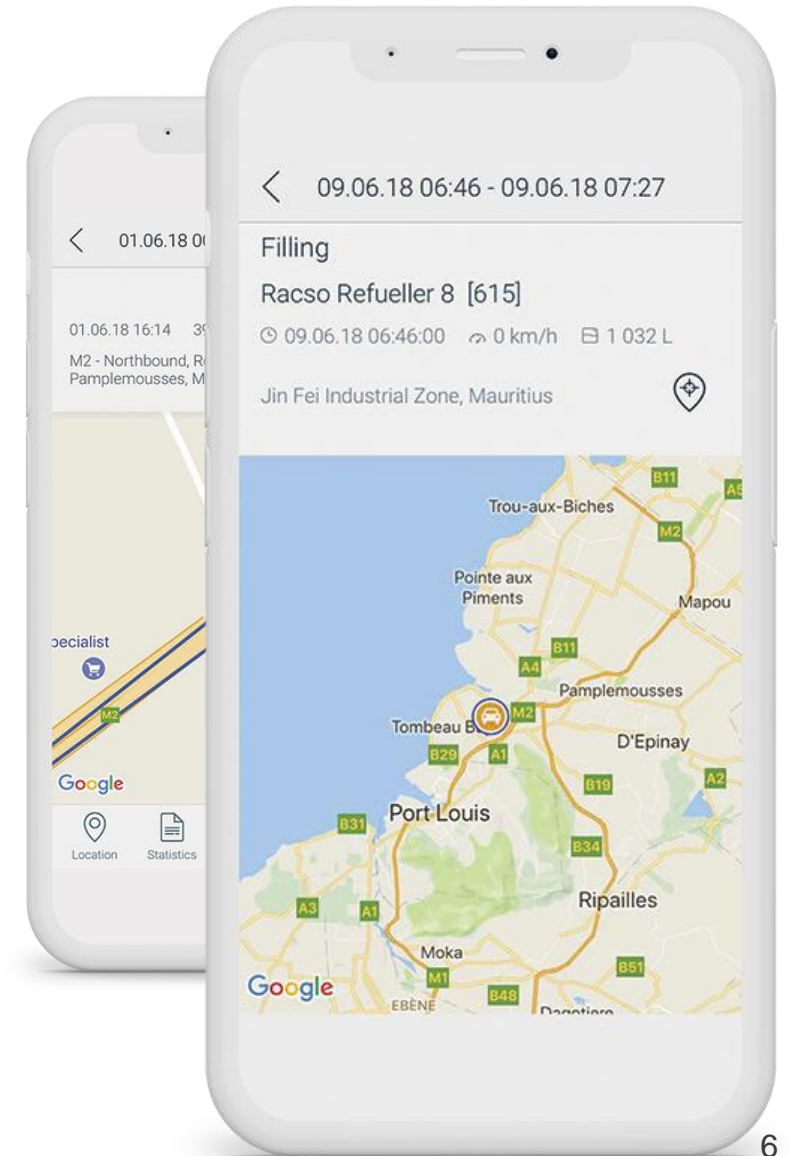


UNIVERSAL PLATFORM

OMNICOMM

- OPEN API
- FLEXIBLE & MODULAR
- WITH INTEGRATED BUSINESS INTELLIGENCE

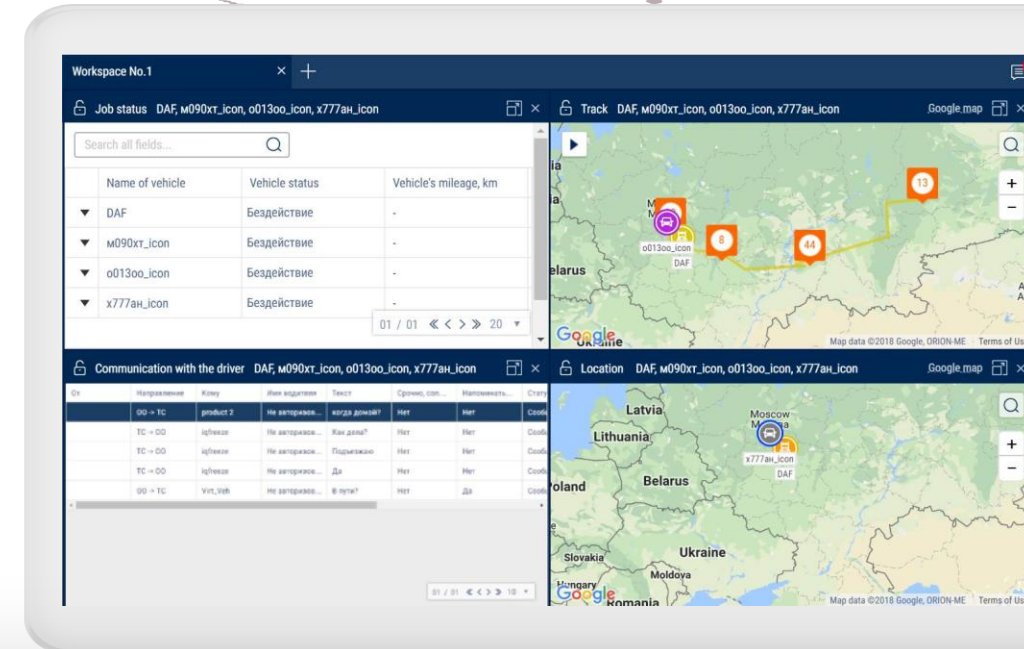
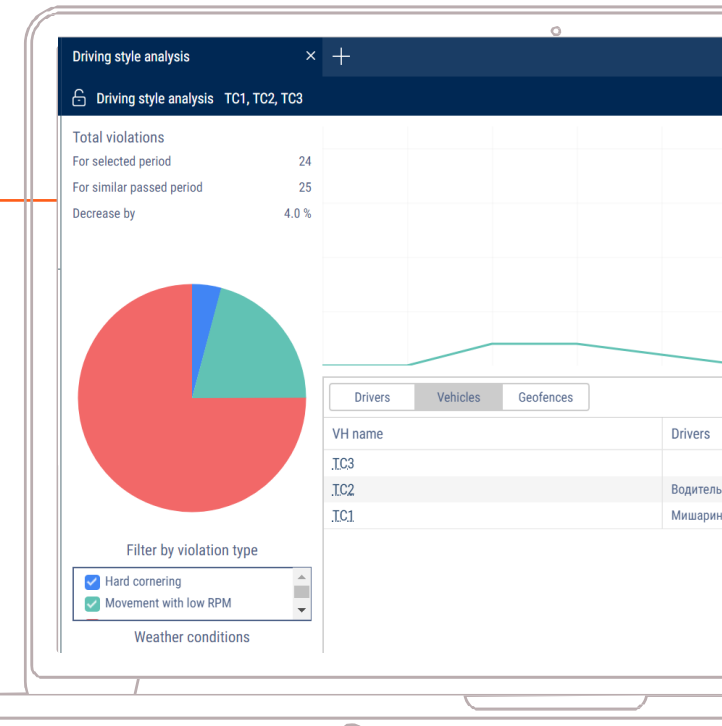
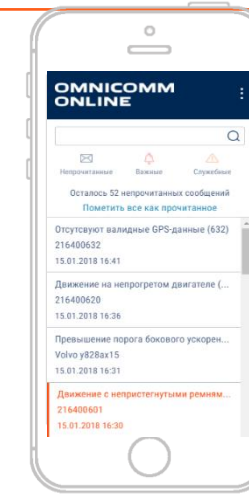
Powered by



FLEET MANAGEMENT PLATFORM

- **Cloud-based:**
available from anywhere with Internet access, iOS & Android apps
- **Real-time monitoring**
of both heavy & light commercial vehicles
- **Open API**
for integration into ERP, TMS, IoT SDP platforms
- **Rich reporting:**
30+ built-in reports, custom reports

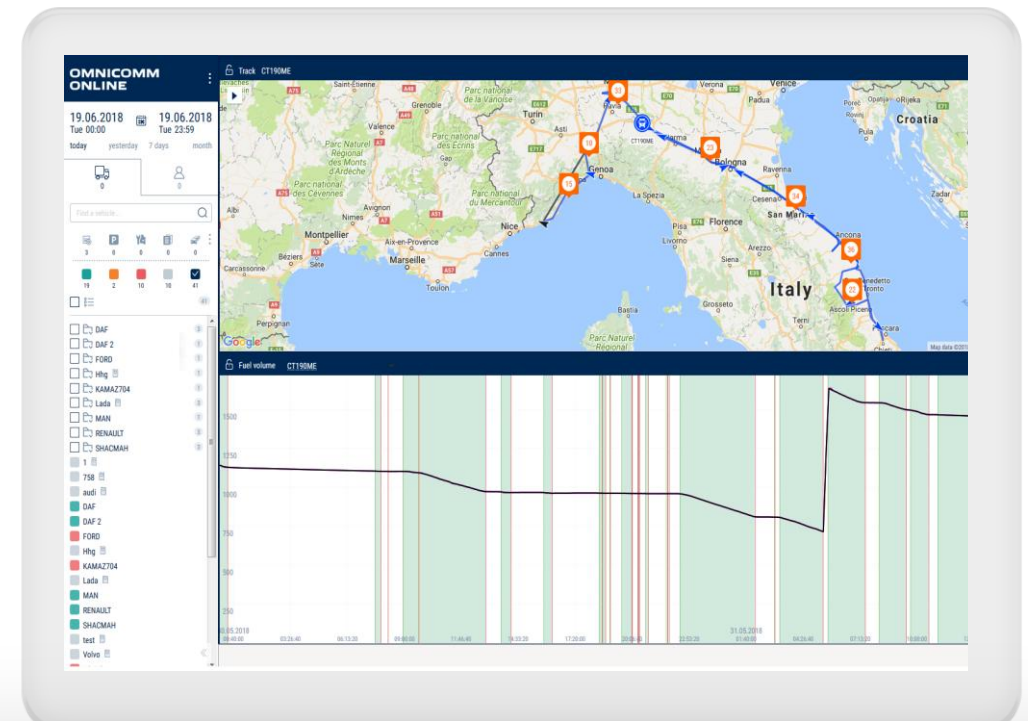
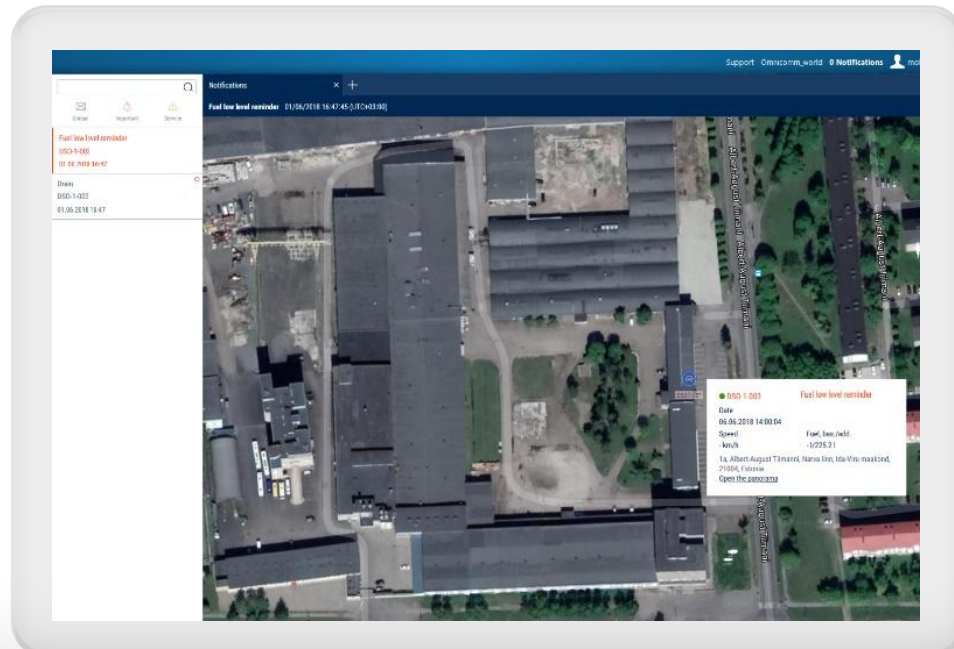
FLEET MANAGEMENT CAN BE INTRODUCED FOR HEAVY & LIGHT VEHICLES, LOCOMOTIVES, SHIPS, SPECIAL MACHINERY, ETC.



MOST ADVANCED FUEL ANALYTICS

OMNICOMM

- Fuel used on a route
- Re-fueling alerts
- Refueling & draining
- Detailed stats, CO₂ emissions, deviation from the rated fuel consumption, etc.



YES. HERE'S WHY

FUEL & LABOR COST



WHAT ARE THE SAVINGS?*

OMNICOMM



Light commercial vehicles

10-20%



Medium & passenger vehicles

20-30%



Heavy trucks, special
equipment

30-50%

AVERAGE TIME TO ROI - BETWEEN 3 WEEKS & 3 MONTHS

* OMNICOMM data, based on
customer interviews



OMNICOMM + PARTNER

TOGETHER WE CAN ACHIEVE MORE

TOGETHER WE CAN ACHIEVE MORE

- Complete modular solution
- Global partner eco-system & marketplace
- Tech support & co-marketing

OMNICOMM
FUELLING YOUR BUSINESS



IDEAL ON-BOARD TERMINAL
FOR EVERY VEHICLE TYPE



FEATURE-RICH FLEET
MANAGEMENT PLATFORM



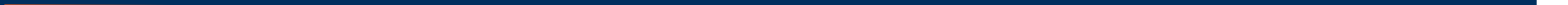
MOST ACCURATE & RELIABLE
FUEL LEVEL SENSOR

TOGETHER WE CAN ACHIEVE MORE

PARTNER

- Value-added services
- Intelligence with analytical reporting
- Consulting: help customers better understand their processes & identify growth opportunities

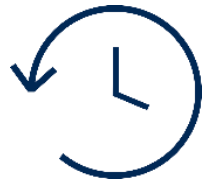




WHO WE ARE

OMNICOMM

GLOBAL FUEL & FLEET MANAGEMENT SOLUTION PROVIDER



20
years
on the market



110
countries
sales geography



11
industries
served by our
solutions



1 MLN
vehicles
equipped with
our technology



100K sensors
38K terminals
shipped in 2017



3K+
partners
worldwide

A futuristic white drone with '2X' on its side is flying over a city skyline at dusk. The drone has a complex structure with multiple rotors and a large propeller. In the background, there are several tall buildings and a river. Another drone is visible on a rooftop in the upper right corner.

WHAT'S NEXT?

Let's talk!

Marina Ievleva
Regional Sales Manager MENA, Omnicomm
ievleva@omnicomm-world.com
www.omnicomm-world.com